



installation guide **ACTIV-Pro**



PACKING LIST

Frame pcs

Column	2
Feet	2
End pipe	2
Outer pipe	4
Connection pipe	2

Control box/ handset pcs

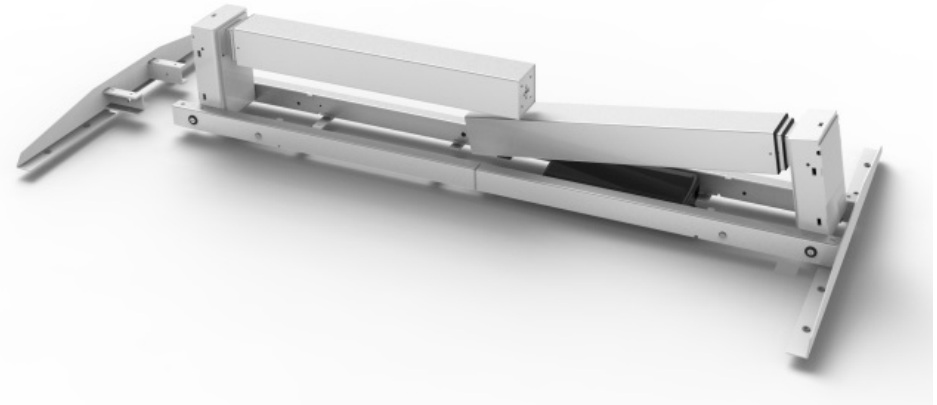
Control box	1
Handset	1
AC cable, 2000 mm	1
Cable for control box, 1410 mm	2
Cable for handset, 1800 mm	1

Hardware pcs

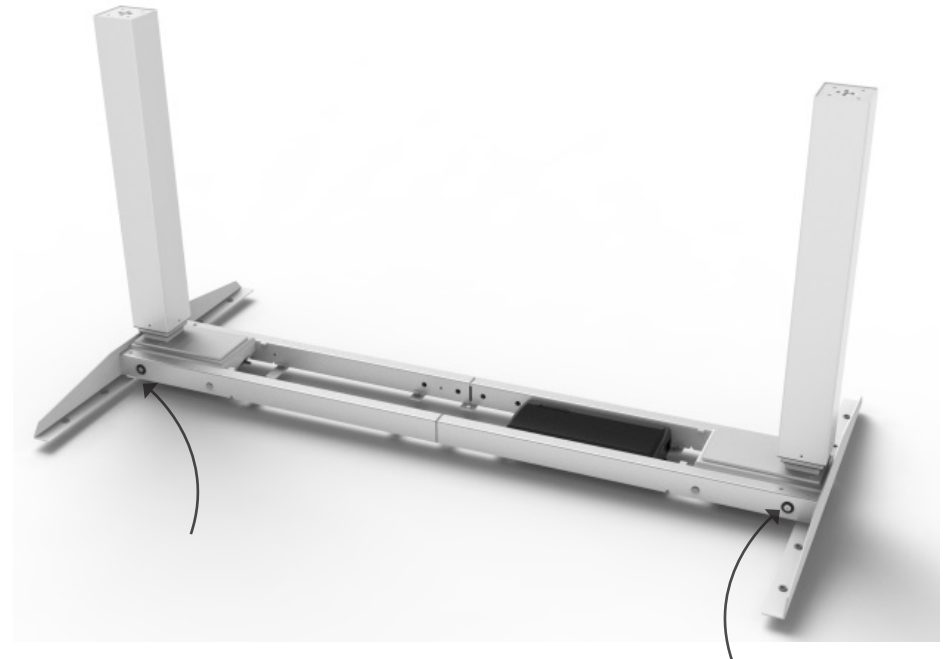
Screw for outer pipe	8
Screw for feet	8
Tailstock for con. pipe	8
Rubber washer	18
Screw incl. washer for desktop	18
Screw for handset	2
Cable clamp	8
Rubber grip	8

- 1 Unpack all items.
Note: The main frame structure will arrive pre-assembled.
- 2 Insert the cantilevers to both ends of the stretcher bar (with the holes flat on the ground). Insert completely. Stand legs up perpendicular to stretcher bar.
- 3 Insert the cone end socket set screws with a #5 Allen wrench. Tighten completely.

2



3

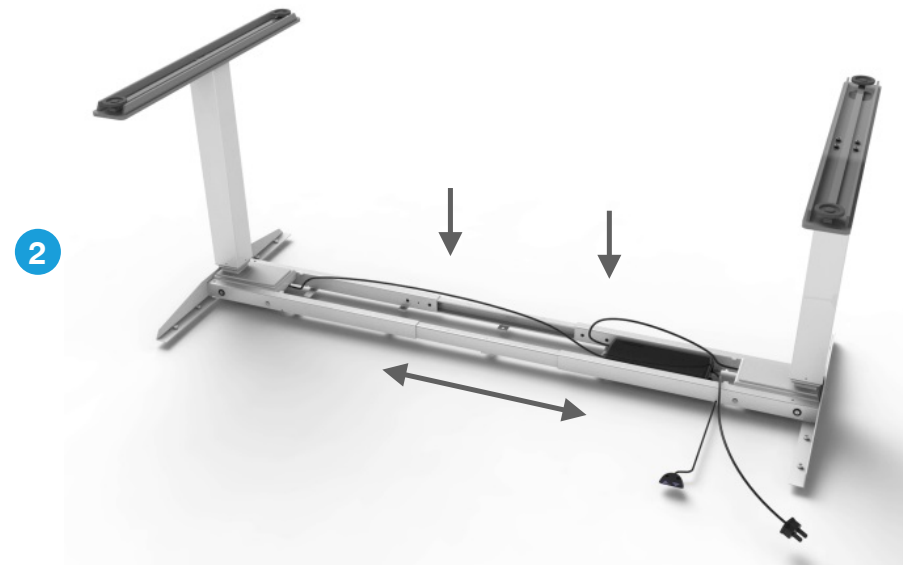
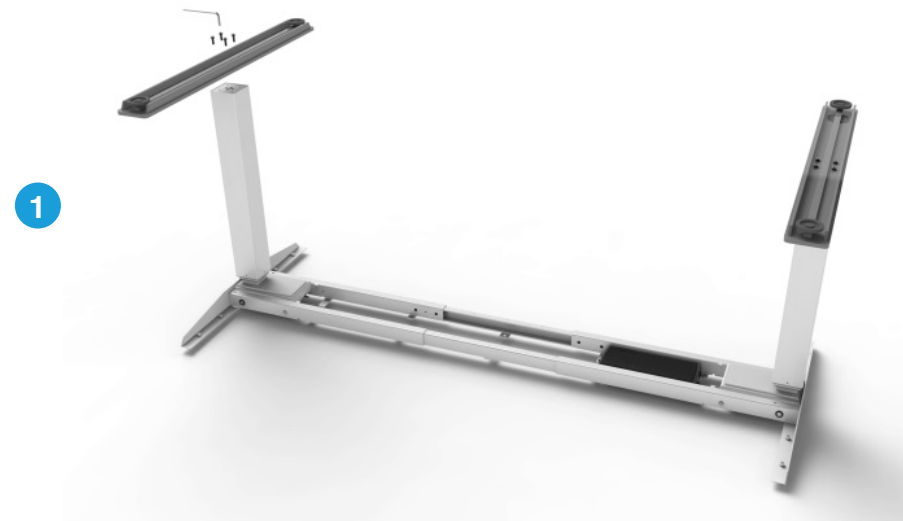


1 Place each foot at the end of the leg columns. Line up the holes and drop in the four #8 socket screws w/ washer in place. Screw and tighten with M8 Allen key.

2 Adjust the base to the appropriate worksurface width before attaching the worksurface. Start by pulling out the 4 round plastic caps (a flat surface or screw driver will be helpful).

Adjust for each size worksurface:

- **48" worksurfaces:** the base is already set to correct width – no adjustment necessary.
- **60" worksurfaces:** loosen the 4 center screws on 1 side, move stretcher bar out 6". Repeat on opposite side.
- **72" worksurfaces:** loosen 4 center screws on 1 side, move stretcher bar out 12". Repeat on opposite side.

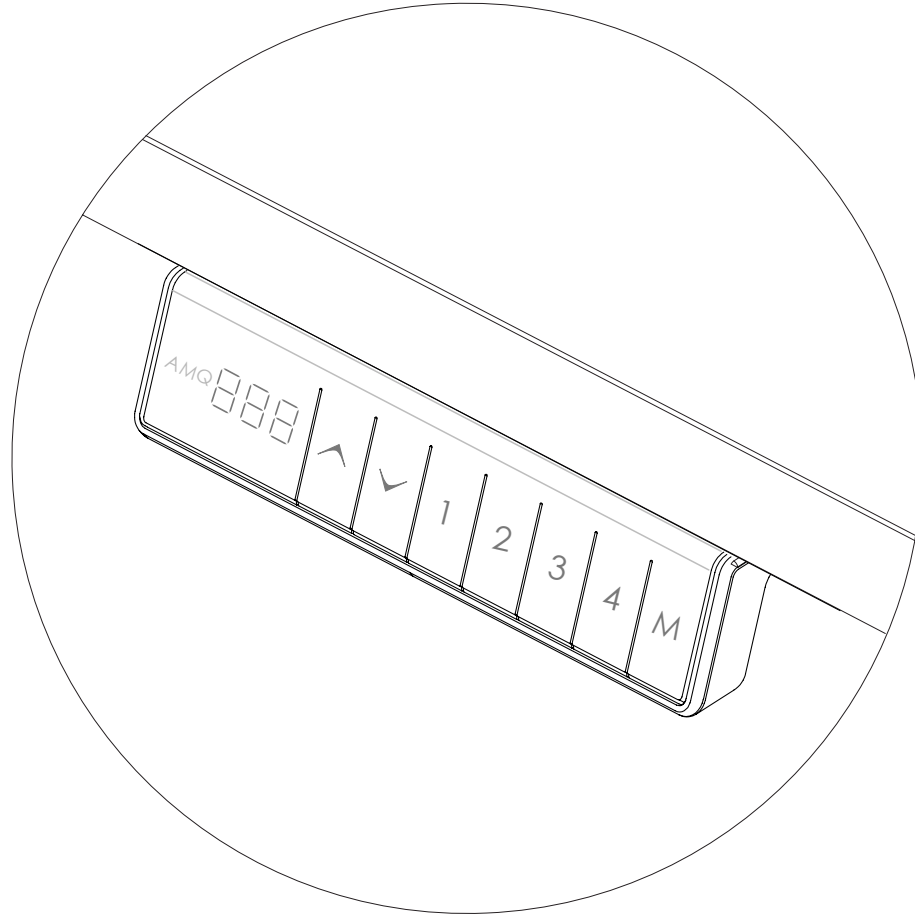


- 1 To attach the worksurface, start by laying the worksurface down on the floor with the top down.
- 2 Lay the base assembly upside down on top of the worksurface.
- 3 Double check to ensure that the base is properly positioned on the underside of the worksurface.
- 4 Attach the base to the worksurface using wood screws.
Note: Wood screws are not provided with the ACTIV-Pro base, but are provided with AMQ worksurfaces.
- 5 Attach the LED display unit using wood screws flush to the left or right of the front edge of the worksurface.



- 1 To Program Up to 4 Presets:** Use the up/down arrows to find desired height, then press “M” followed by the number 1, 2, 3 or 4.
- 2 To Test Programmed Height:** Use the up/down arrows to adjust the table to a height other than the preset height. Then push and hold the number you programmed to see if it automatically adjusts to the height programmed in Step 1. You may need to hold for 2-3 seconds to activate the base.

Note: If it does not adjust to the programmed height, repeat Step 1 followed by Step 2.



5 Day Open Plan we provide exceptional experiences with reliable, easy interactions and successfully fulfilled orders in only 5 days



915 Walsh Avenue / Santa Clara, CA 95050 (877) 801-0370 amqsolutions.com